

FOR QUESTIONS, CALL THE
WISCONSIN OFFICE
REGION 78
PHONE: (262) 241 - 9210
EMAIL: reg78@econair.com

PATENT NUMBERS

AC-PSP (UNITED STATES) - US PATENT 7963830 B2.
AC-PSP WALL (CANADA) - CA PATENT 2820509.
AC-PSP ISLAND (CANADA) - CA PATENT 2520330.

HOOD INFORMATION - JOB#6953597

| HOOD NO | TAG | MODEL | MANUFACTURER | LENGTH | MAX COOKING TEMP | TYPE | APPLIANCE DUTY | DESIGN CFM/FT | TOTAL EXH CFM | EXHAUST PLENUM RISER(S) | | | | TOTAL SUPPLY CFM | HOOD CONSTRUCTION | HOOD CONFIG | | | | |
|---------|-----|--------------------|--------------|--------|------------------|------|----------------|---------------|---------------|-------------------------|------|--------|-----|------------------|-------------------|-------------|------|----------------------|------------|-------|
| | | | | | | | | | | WIDTH | LENG | HEIGHT | DIA | | | CFM | VEL | SP | END TO END | RDW |
| 1 | | 5424 EX-2-PSP-F | ECON-AIR | 12' 0" | 600 DEG | I | HEAVY | 221 | 2650 | 10' | 25' | 4' | | 2650 | 1526 | -0.503" | 2650 | 430 SS WHERE EXPOSED | ALONE | ALONE |

HOOD INFORMATION

| HOOD NO | TAG | FILTER(S) | | | | LIGHT(S) | | | | UTILITY CABINET(S) | | | | FIRE SYSTEM PIPING | HOOD HANGING WEIGHT | | | | | | | |
|---------|-----|------------------------|-----|--------|--------|------------------------|-----|----------------|------------|--------------------|------|-------------|--|--------------------|---------------------|------------|----------|--|--|--|----|---------|
| | | TYPE | QTY | HEIGHT | LENGTH | EFFICIENCY @ 7 MICRONS | QTY | TYPE | WIRE GUARD | LOCATION | SIZE | FIRE SYSTEM | | | | ELECTRICAL | SWITCHES | | | | | |
| 1 | | SS BAFFLE WITH HANDLES | 9 | 16" | 16" | 30% | 4 | L55 SERIES E26 | NO | | | | | | | | | | | | NO | 798 LBS |

HOOD OPTIONS

| HOOD NO | TAG | OPTION |
|---------|-----|---|
| 1 | | INSULATION FOR TOP OF HOOD. STRUCTURAL FRONT PANEL. RIGHT VERTICAL END PANEL 27" TOP WIDTH, 21" BOTTOM WIDTH, 80" HIGH INSULATED 430 SS. LEFT VERTICAL END PANEL 27" TOP WIDTH, 21" BOTTOM WIDTH, 80" HIGH INSULATED 430 SS. |

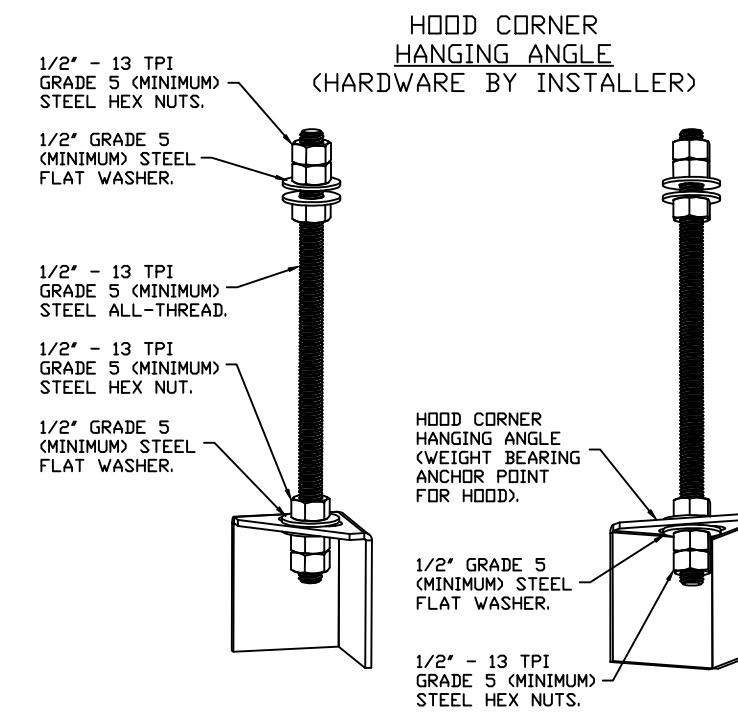
PERFORATED SUPPLY PLENUM(S)

| HOOD NO | TAG | POS | LENGTH | WIDTH | HEIGHT | TYPE | RISER(S) | | |
|---------|-----|-------|--------|-------|--------|------|----------|------|--------|
| | | | | | | | WIDTH | LENG | DIA |
| 1 | | Front | 144' | 20' | 6' | MUA | 18" | 530 | 0.145" |
| | | | | | | MUA | 18" | 530 | 0.145" |
| | | | | | | MUA | 18" | 530 | 0.145" |
| | | | | | | MUA | 18" | 530 | 0.145" |
| | | | | | | MUA | 18" | 530 | 0.145" |

CLEARANCE TO COMBUSTIBLES

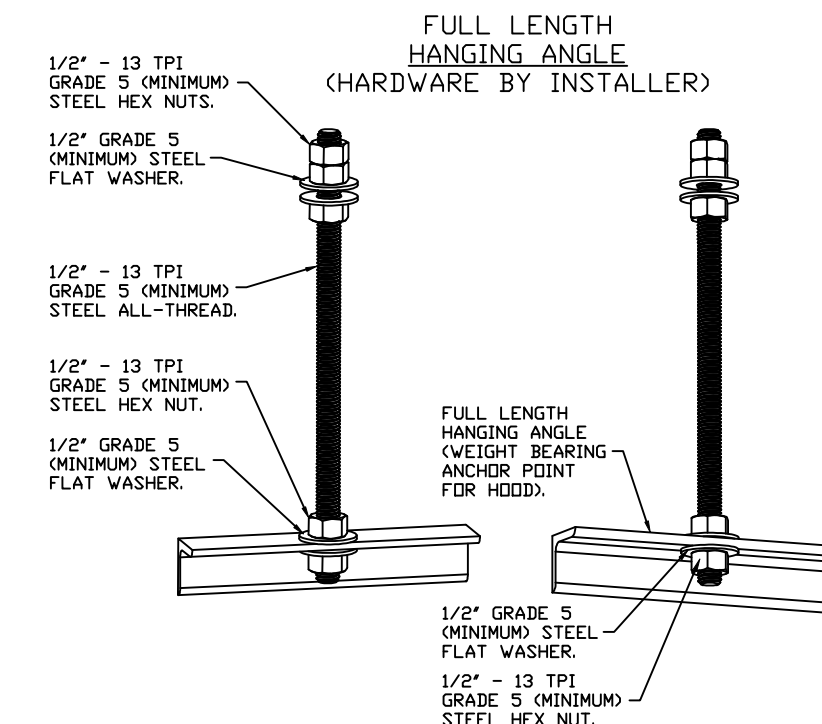
| HOODS # | SURFACE | *CLEARANCE |
|---------|---------|------------|
| 1 | TOP | 0" |
| | FRONT | 0" |
| | BACK | 18" |
| | LEFT | 18" |
| | RIGHT | 18" |

- *0" CLEARANCE TO COMBUSTIBLES CONFORMS TO UL710 STANDARD.



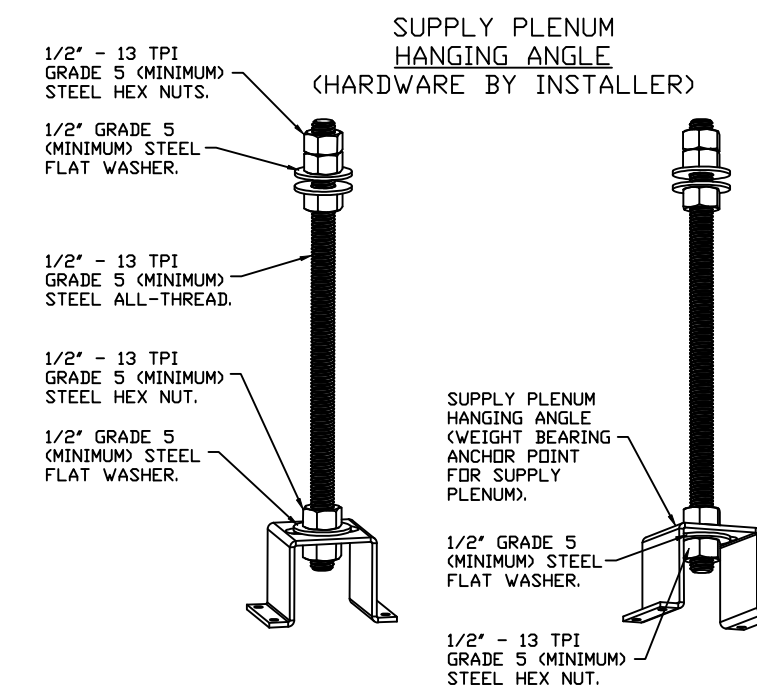
ASSEMBLY INSTRUCTIONS

HANGING ANGLE MUST BE SUPPORTED WITH 1/2" - 13 TPI GRADE 5 (MINIMUM) ALL-THREAD. SANDWICH HANGING ANGLES AND CEILING ANCHOR POINTS WITH 1/2" GRADE 5 (MINIMUM) STEEL FLAT WASHERS AND 1/2" - 13 TPI GRADE 5 (MINIMUM) HEX NUTS AS SHOWN. MUST USE DOUBLED HEX NUT CONFIGURATION BENEATH HOOD HANGING ANGLES AND ABOVE CEILING ANCHORS. MAINTAIN 1/4" OF EXPOSED THREADS BENEATH BOTTOM HEX NUT. TORQUE ALL HEX NUTS TO 57 FT-LBS.



ASSEMBLY INSTRUCTIONS

HANGING ANGLE MUST BE SUPPORTED WITH 1/2" - 13 TPI GRADE 5 (MINIMUM) ALL-THREAD. SANDWICH HANGING ANGLES AND CEILING ANCHOR POINTS WITH 1/2" GRADE 5 (MINIMUM) STEEL FLAT WASHERS AND 1/2" - 13 TPI GRADE 5 (MINIMUM) HEX NUTS AS SHOWN. MUST USE DOUBLED HEX NUT CONFIGURATION ABOVE CEILING ANCHORS. SINGLE HEX NUT BENEATH HANGING ANGLE IS ACCEPTABLE FOR FULL LENGTH HANGING ANGLES. MAINTAIN 1/4" OF EXPOSED THREADS BENEATH BOTTOM HEX NUT. TORQUE ALL HEX NUTS TO 57 FT-LBS.



ASSEMBLY INSTRUCTIONS

HANGING ANGLE MUST BE SUPPORTED WITH 1/2" - 13 TPI GRADE 5 (MINIMUM) ALL-THREAD. SANDWICH HANGING ANGLES AND CEILING ANCHOR POINTS WITH 1/2" GRADE 5 (MINIMUM) STEEL FLAT WASHERS AND 1/2" - 13 TPI GRADE 5 (MINIMUM) HEX NUTS AS SHOWN. MUST USE DOUBLED HEX NUT CONFIGURATION ABOVE CEILING ANCHORS. SINGLE HEX NUT BENEATH HANGING ANGLE IS ACCEPTABLE FOR PSP HANGING ANGLES. MAINTAIN 1/4" OF EXPOSED THREADS BENEATH BOTTOM HEX NUT. TORQUE ALL HEX NUTS TO 57 FT-LBS.

REVISIONS

| REVISIONS | DESCRIPTION | DATE |
|-----------|-------------|------|
| Δ | | |
| Δ | | |
| Δ | | |
| Δ | | |



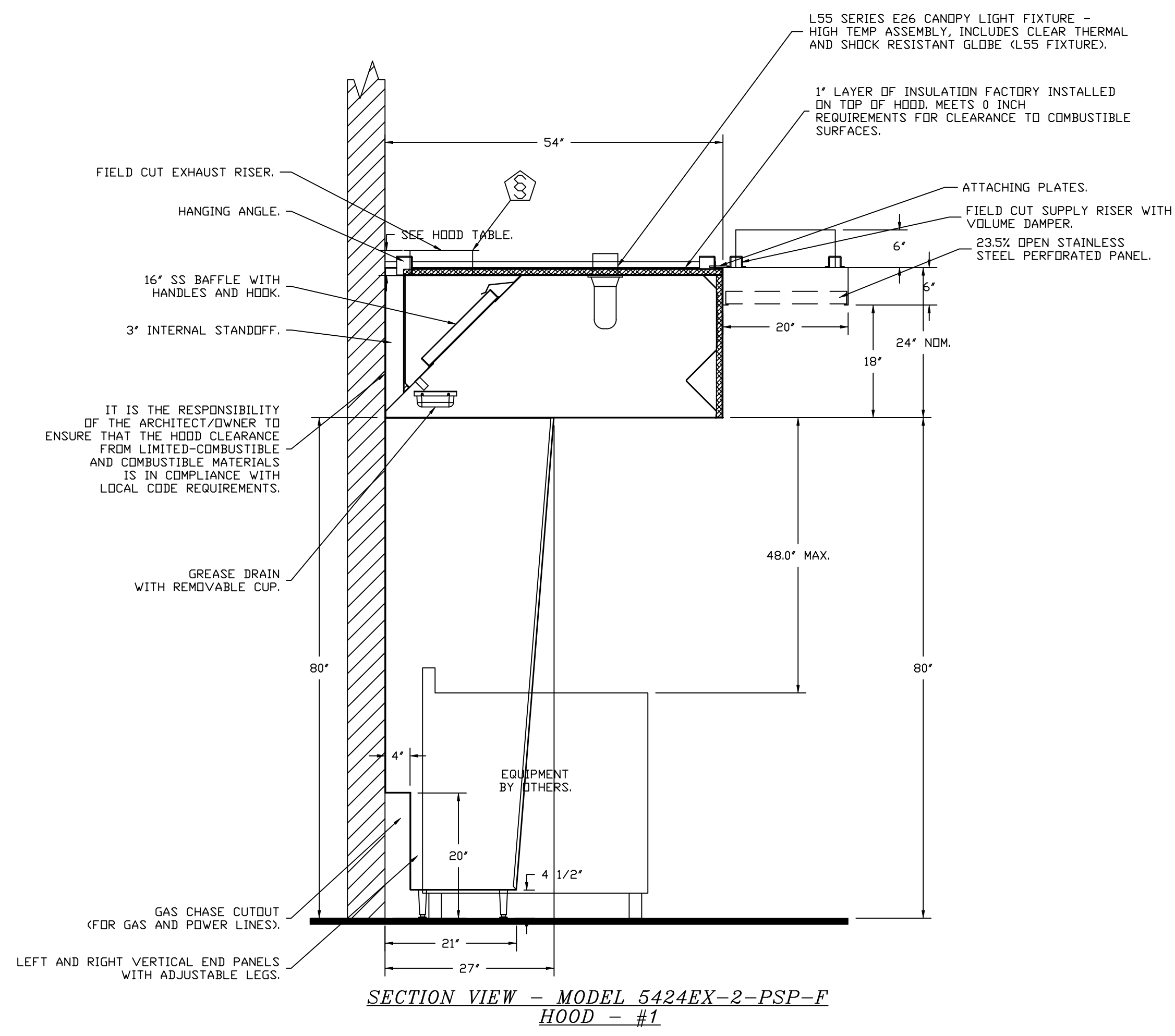
econ·air

WISCONSIN OFFICE
www.econair.com
609 Bridge Street, Grafton, WI, 53024 PHONE: (262) 241 - 9210 FAX: 9192275945 EMAIL: reg78@econair.com

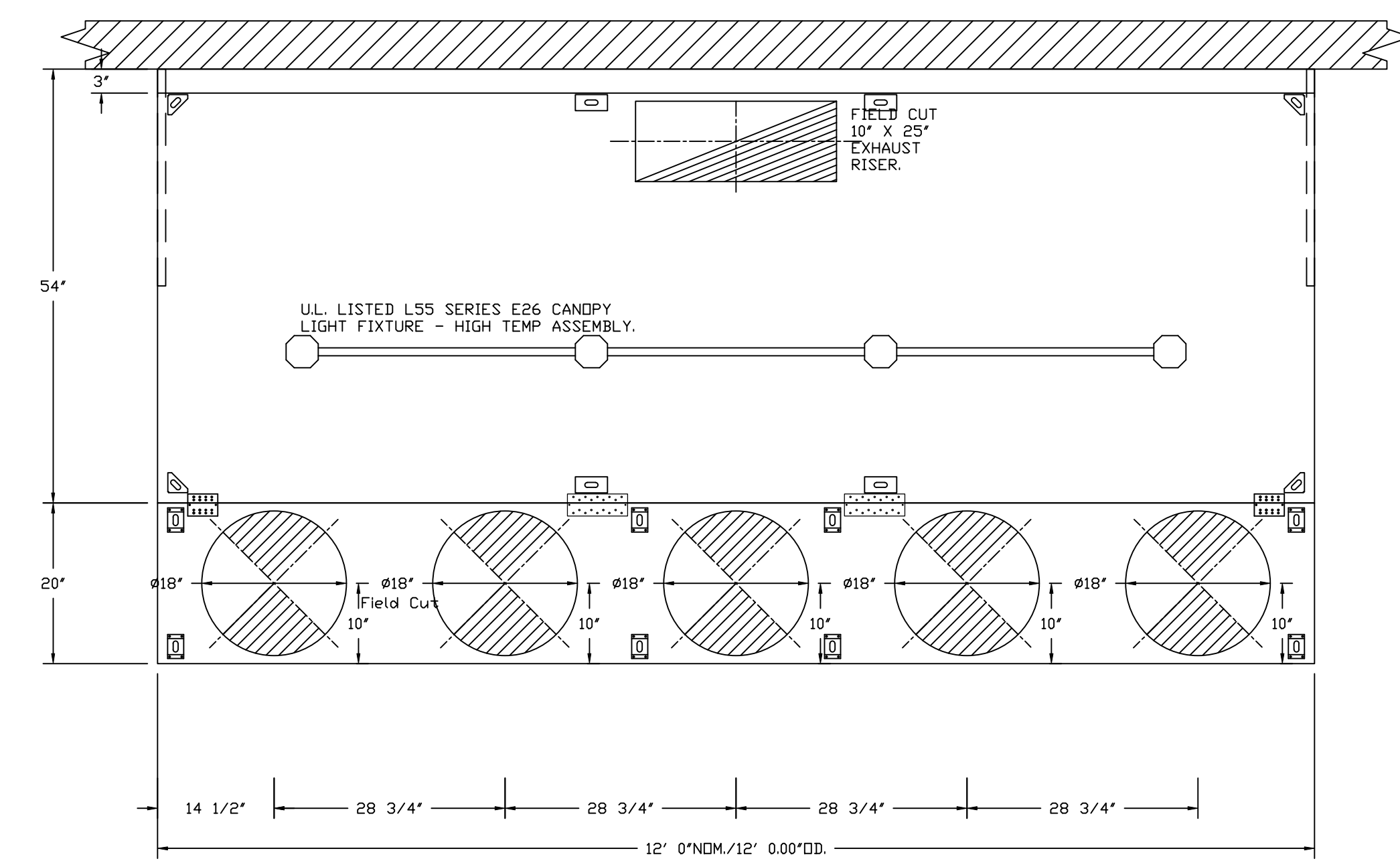
Midwest Monsters 12ft
MILWAUKEE, WI, 53206

DATE: 8/9/2024
DWG.#: 6953597
DRAWN BY:
SCALE: 3/4" = 1'-0"
MASTER DRAWING

SHEET NO.
1



SECTION VIEW - MODEL 5424EX-2-PSP-F
HOOD - #1



PLAN VIEW - HOOD #1
12' 0.00" LONG 5424EX-2-PSP-F
NOTE: ADDITIONAL HANGING ANGLES PROVIDED FOR HOODS 12' AND LONGER.

| REVISIONS | |
|-------------|------|
| DESCRIPTION | DATE |
| | |
| | |
| | |
| | |

econ·air

WISCONSIN OFFICE

www.econair.com

609 Bridge Street, Grafton, WI, 53024 PHONE: (262) 241 - 9210 FAX: 9192275945 EMAIL: reg7@econair.com

Midwest Monsters 12ft
MILWAUKEE, WI, 53206

DATE: 8/9/2024
DWG.#: 6953597
DRAWN BY:
SCALE: 3/4" = 1'-0"
MASTER DRAWING

SHEET NO.
2

EXHAUST FAN INFORMATION - JOB#6953597

| FAN UNIT NO | TAG | QTY | FAN UNIT MODEL # | MANUFACTURER | CFM | ESP | RPM | MOTOR ENCL | HP | BHP | PHASE | VOLT | FLA | DISCHARGE VELOCITY | WEIGHT (LBS) | SDNES |
|-------------|-----|-----|------------------|--------------|------|-------|------|-------------|-------|--------|-------|------|-----|--------------------|--------------|-------|
| 2 | | 1 | EADU180H | ECON-AIR | 2650 | 1.200 | 1170 | DDP,PREMIUM | 1.500 | 1.1180 | 3 | 208 | 6.6 | 612 FPM | 183 | 14.2 |

MUA FAN INFORMATION - JOB#6953597

| FAN UNIT NO | TAG | QTY | FAN UNIT MODEL # | BLOWER | HOUSING | MIN CFM | DESIGN CFM | ESP | RPM | MOTOR ENCL | HP | BHP | PHASE | VOLT | FLA | MCA | MOCP | WEIGHT (LBS) | SDNES |
|-------------|-----|-----|------------------|------------|----------|---------|------------|-------|------|-------------|-------|--------|-------|------|-----|------|------|--------------|-------|
| 1 | | 1 | EA2-D.250-20D | 20MF-2-MOD | A2-D.250 | 2000 | 2650 | 0.500 | 1142 | DDP,PREMIUM | 1.000 | 0.7960 | 3 | 208 | 3.8 | 4.8A | 15A | 655 | 8.7 |

GAS FIRED MAKE-UP AIR UNIT(S)

| FAN UNIT NO | TAG | INPUT BTUs | OUTPUT BTUs | TEMP RISE | REQUIRED INPUT GAS PRESSURE | GAS TYPE | BURNER EFFICIENCY(%) |
|-------------|-----|------------|-------------|-----------|-----------------------------|----------|----------------------|
| 1 | | 262186 | 241211 | 90°F | 7 IN. W.C. - 14 IN. W.C. | NATURAL | 92 |

FAN OPTIONS

| FAN UNIT NO | TAG | QTY | DESCRIPTION |
|-------------|-----|-----|--|
| 1 | | 1 | SIZE 2 TEMPERED COMMERCIAL DOWN DISCHARGE FOR DIRECT DRIVE AHUS |
| | | 1 | INLET PRESSURE GAUGE, 0-35" |
| | | 1 | MANIFOLD PRESSURE GAUGE, -5 TO 15" WC |
| | | 1 | BUTTERFLY MOD VALVE OPTION FOR MOD SIZE 2 (1" MOD VALVE) |
| | | 1 | SHIP LOOSE GAS STRAINER 1" |
| | | 1 | MOTORIZED BACKDRAFT DAMPER FOR A2-D HOUSING - MEETS AMCA CLASS 1A RATING |
| | | 1 | OPPOSITE SIDE HEATER CONTROLS |
| | | 1 | SEPARATE 120V WIRING PACKAGE (REQUIRED AND USED ONLY FOR DCV OR PREWIRE WITH VFD) - THREE PHASE ONLY |
| | | 1 | SIZE 2 DIRECT FIRED HEATER LOW CFM PROFILE PACKAGE - USED ON HEATERS UNDER 2500 CFM |
| | | 1 | 2 YEAR PARTS WARRANTY |
| | | 1 | EXTERIOR GAS CONNECTION PROVIDED BY FACTORY WITH QUICK SEAL AND ANTI-ROTATION BRACKET |
| | 2 | | 1 |
| | | 1 | FAN BASE CERAMIC SEAL - DU/DR180HFA - INSTALLED AT PLANT - FOR GREASE DUCTS |
| | | 1 | HINGE KIT - SHIPS LOOSE FOR CURB SUPPLIED BY OTHERS |
| | | 1 | 2 YEAR PARTS WARRANTY |

FAN ACCESSORIES

| FAN UNIT NO | TAG | EXHAUST | | | | SUPPLY | | |
|-------------|-----|------------|----------------|------------|----------------|----------------|------------------|------------|
| | | GREASE CUP | GRAVITY DAMPER | WALL MOUNT | SIDE DISCHARGE | GRAVITY DAMPER | MOTORIZED DAMPER | WALL MOUNT |
| 1 | | | | | | | YES | |
| 2 | | YES | | | | | | |

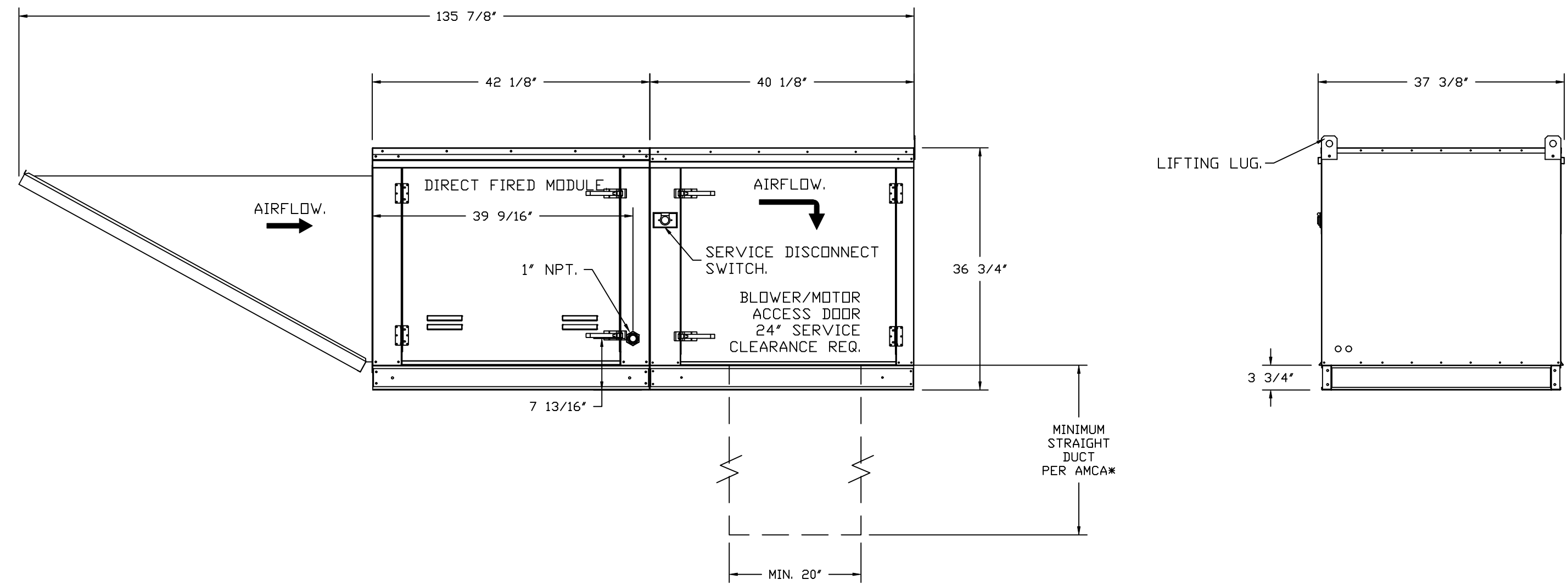
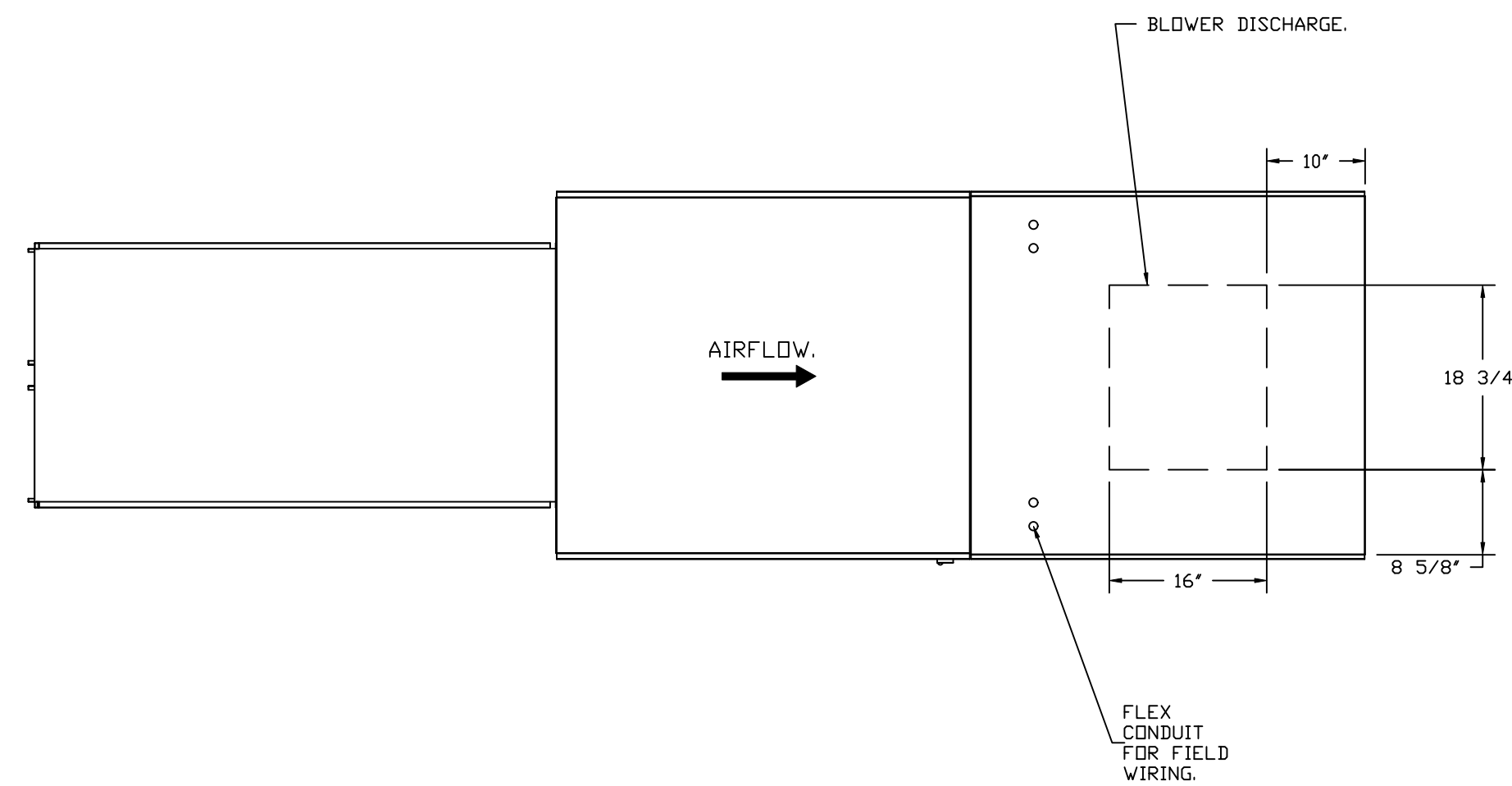
| HMI SCHEDULE | | | | |
|--------------|---------------|--------------|----------------|----------------|
| UNIT NUMBER | HMI # | HMI LOCATION | TEMP AVERAGING | MODBUS ADDRESS |
| FAN #1 | HMI #1 - UNIT | IN UNIT | NOT AVERAGED | 55 |

FAN #1 EA2-D.250-20D - HEATER
 1. DIRECT GAS FIRED HEATED MAKE UP AIR UNIT WITH 20" MIXED FLOW DIRECT DRIVE FAN.
 2. INTAKE HOOD WITH EZ FILTERS.
 3. DOWN DISCHARGE - AIR FLOW LEFT -> RIGHT.
 4. DOWN DISCHARGE CONSTRUCTION FOR SIZE 2 DIRECT DRIVE AHUS.
 5. GAS PRESSURE GAUGE, 0-35", 2.5" DIAMETER, 1/4" THREAD SIZE.
 6. GAS PRESSURE GAUGE, -5 TO +15 INCHES WC, 2.5" DIAMETER, 1/4" THREAD SIZE.
 7. BUTTERFLY MOD VALVE OPTION FOR MOD SIZE 2 (1" MOD VALVE).
 8. SHIP LOOSE GAS STRAINER TO BE INSTALLED UPSTREAM OF UNIT CONNECTION. 1" CONNECTION.
 9. MOTORIZED BACK DRAFT DAMPER 22.75" X 24" FOR SIZE 2 STANDARD & MODULAR HEATER UNITS V/EXTENDED SHAFT, STANDARD GALVANIZED CONSTRUCTION, 3/4" REAR FLANGE, LOW LEAKAGE, LF120S ACTUATOR INCLUDED.
 10. MOUNT MOTOR AND CONTROLS ON OPPOSITE SIDE OF HEATER.
 11. SEPARATE 120VAC WIRING PACKAGE FOR MAKE-UP AIR UNITS. OPTION MUST BE SELECTED WHEN MOUNTING VFD IN PREWIRE PANEL OR WITH DCV PACKAGE. PROVIDES SEPARATE 120VAC INPUT TO SUPPLY FAN. THIS 120V SIGNAL MUST BE RUN BY ELECTRICIAN FROM DCV TO MUA SWITCH.
 12. PROFILE PLATE CONFIGURATION FOR SIZE 2 DIRECT FIRED UNIT FOR LOW CFM APPLICATIONS.
 13. HINGED DOUBLE WALL INSULATED DOOR ASSEMBLY (BURNER/BLOWER SECTION).
 14. EXTERIOR GAS CONNECTION PROVIDED BY FACTORY WITH QUICK SEAL AND ANTI-ROTATION BRACKET.
 15. 2 YEAR PARTS WARRANTY.

NOTE: SUPPLY DUCT MUST BE INSTALLED TO MEET SMACNA STANDARDS. A MINIMUM STRAIGHT DUCT LENGTH MUST BE MAINTAINED DOWNSTREAM OF UNIT DISCHARGE AS OUTLINED IN AMCA PUBLICATION 201. WHEN USING RECTANGULAR DUCTWORK, ELBOWS MUST BE RADIUS THROAT, RADIUS BACK WITH TURNING VANES. FLEXIBLE DUCTWORK AND SQUARE THROAT/SQUARE BACK ELBOWS SHOULD NOT BE USED. ANY TRANSITION AND/OR TURNS IN THE DUCTWORK WILL CAUSE SYSTEM EFFECT. SYSTEM EFFECT WILL DRASTICALLY INCREASE STATIC PRESSURE AND REDUCE AIRFLOW. DO NOT RELY ON UNIT TO SUPPORT DUCT IN ANY WAY. FAILURE TO PROPERLY SIZE DUCTWORK MAY CAUSE SYSTEM EFFECTS AND REDUCE PERFORMANCE OF THE EQUIPMENT. SUGGESTED STRAIGHT DUCT SIZE IS 20" X 20".

SUPPLY SIDE HEATER INFORMATION:

WINTER TEMPERATURE = 2°F. TEMP. RISE = 90°F.
 BTUS CALCULATED OFF ACTUAL AIR DENSITY.
 OUTPUT BTUS AT ALTITUDE OF 0.0 FT. = 246947.
 INPUT BTUS AT ALTITUDE OF 0.0 FT. = 268421.
 OUTPUT BTUS AT ALTITUDE OF 649 FT. = 241211.
 INPUT BTUS AT ALTITUDE OF 649 FT. = 262185.



REVISIONS

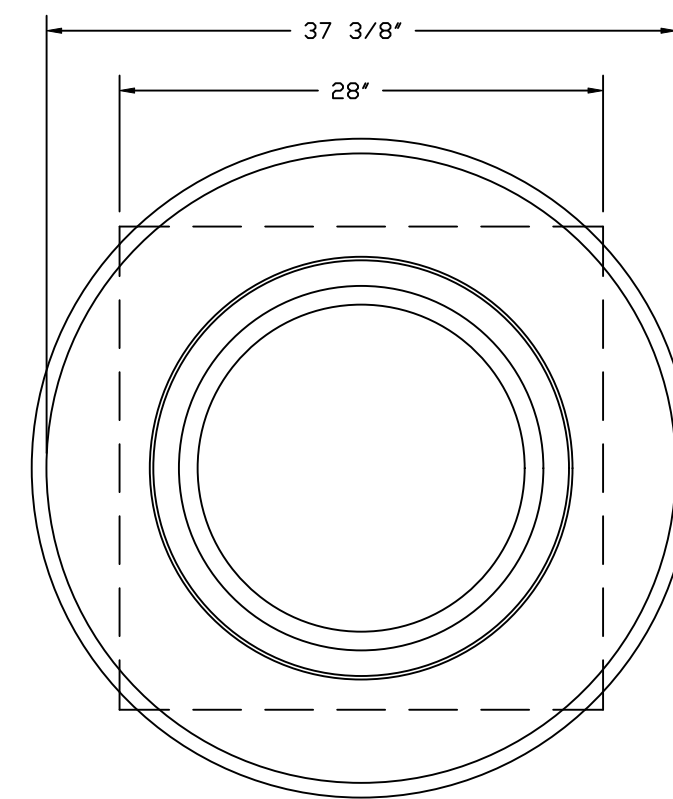
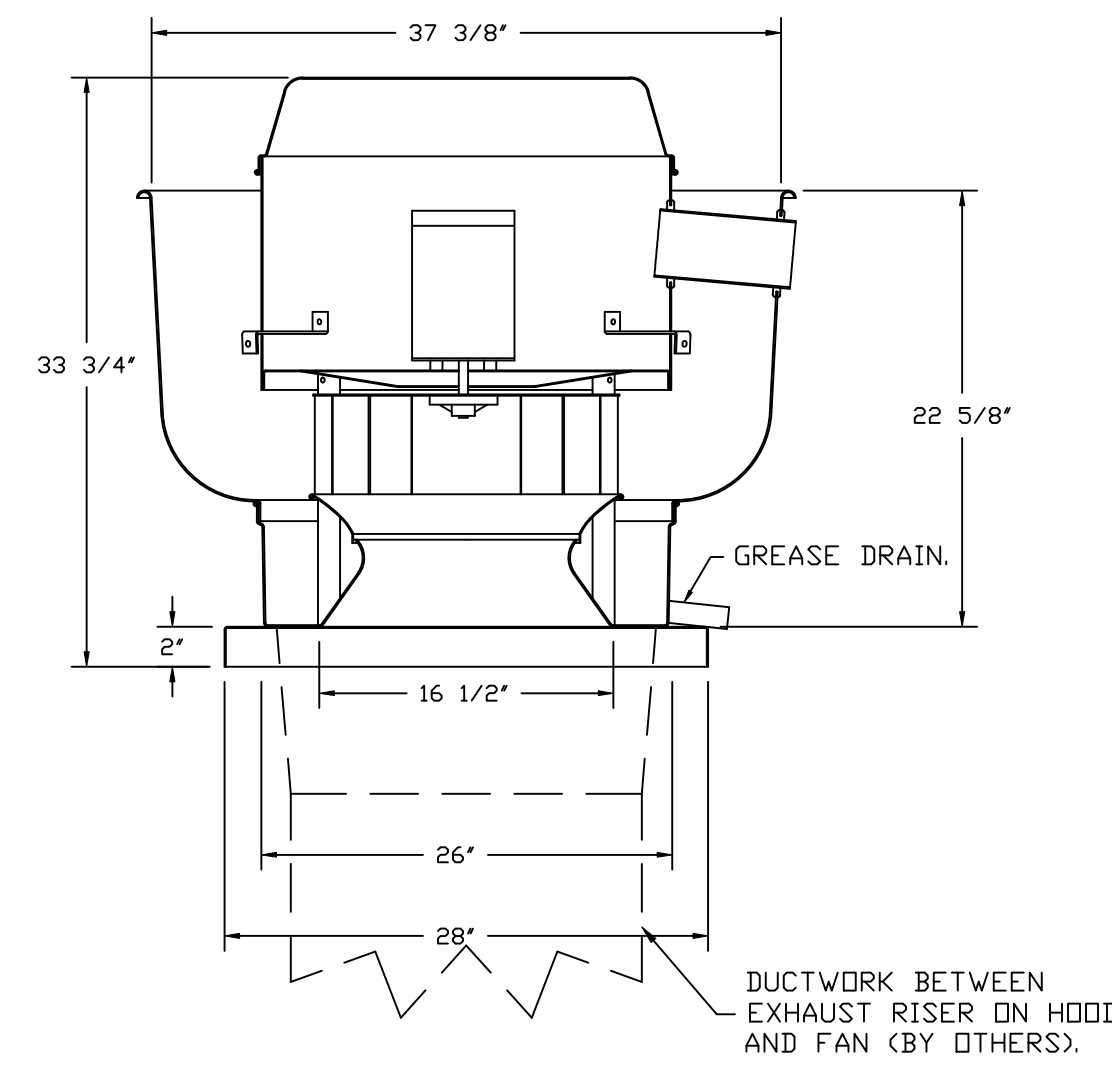
| DESCRIPTION | DATE |
|-------------|------|
| | |
| | |
| | |
| | |

econ.air
 WISCONSIN OFFICE
 609 Bridge Street, Grafton, WI, 53024 PHONE: (262) 241 - 9210 FAX: 919275945 EMAIL: reg7@econair.com

Midwest Monsters 12ft
 MILWAUKEE, WI, 53206

DATE: 8/9/2024
 DWG.#: 6953597
 DRAWN BY:
 SCALE: 3/4" = 1'-0"
 MASTER DRAWING

SHEET NO.
 3



TOP VIEW

FEATURES:

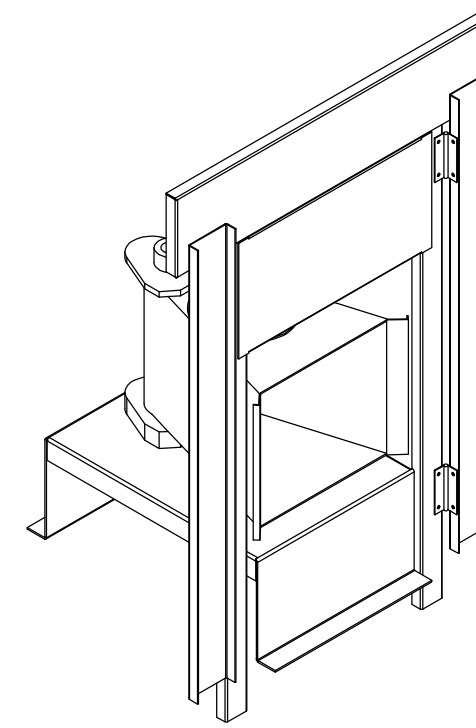
- DIRECT DRIVE CONSTRUCTION (NO BELTS/PULLEYS).
- ROOF MOUNTED FANS.
- RESTAURANT MODEL.
- UL705 AND UL762 AND ULC-S645
- VARIABLE SPEED CONTROL.
- INTERNAL WIRING.
- THERMAL OVERLOAD PROTECTION (SINGLE PHASE).
- HIGH HEAT OPERATION 300°F (149°C).
- GREASE CLASSIFICATION TESTING.
- NEMA 3R SAFETY DISCONNECT SWITCH.

NORMAL TEMPERATURE TEST
EXHAUST FAN MUST OPERATE CONTINUOUSLY WHILE EXHAUSTING AIR AT 300°F (149°C) UNTIL ALL FAN PARTS HAVE REACHED THERMAL EQUILIBRIUM, AND WITHOUT ANY DETERIORATING EFFECTS TO THE FAN WHICH WOULD CAUSE UNSAFE OPERATION.

ABNORMAL FLARE-UP TEST
EXHAUST FAN MUST OPERATE CONTINUOUSLY WHILE EXHAUSTING BURNING GREASE VAPORS AT 600°F (316°C) FOR A PERIOD OF 15 MINUTES WITHOUT THE FAN BECOMING DAMAGED TO ANY EXTENT THAT COULD CAUSE AN UNSAFE CONDITION.

OPTIONS

- GREASE BOX.
- FAN BASE CERAMIC SEAL - DU/DR180HFA
- INSTALLED AT PLANT - FOR GREASE DUCTS.
- HINGE KIT - SHIPS LOOSE FOR CURB SUPPLIED BY OTHERS.
- 2 YEAR PARTS WARRANTY.



DIRECT FIRED (DF) PROFILE PLATE ASSEMBLY

DIRECT FIRED PROFILE PLATE SPECIFICATIONS:

DESCRIPTION:
DIRECT FIRED BURNERS SHALL HAVE PATENTED (US PATENT NO. US6629523B2). SELF-ADJUSTING PROFILE PLATES DESIGNED TO ENSURE PROPER AIR VELOCITY AND PRESSURE DROP ACROSS THE BURNER. PROFILE PLATES SHALL ALLOW BURNERS TO ACHIEVE CLEAN COMBUSTION BY LIMITING BY-PRODUCT LEVELS TO A MAXIMUM OF 5PPM OF CARBON MONOXIDE (CO), AND 0.5PPM OF NITROGEN DIOXIDE (NO2). DIRECT FIRED UNITS SHALL BE CONFIGURED WITH THE BLOWER MOUNTED DOWNSTREAM OF THE BURNER. THIS ARRANGEMENT WILL ENSURE A CONSISTENT AIRFLOW, REGARDLESS OF INLET AIR TEMPERATURE.

APPLICATION:
SPRING-LOADED BURNER PROFILE PLATES ARE ENGINEERED TO AUTOMATICALLY REACT TO THE MOMENTUM OF A FRESH AIR STREAM, WITHOUT THE NEED FOR ANY MOTORS OR ACTUATORS TO MECHANICALLY ADJUST THEM. WITH THIS FEATURE, ALL DF UNITS ARE DESIGNED FOR DEMAND CONTROL VENTILATION (DCV) REQUIREMENTS.

CERTIFICATIONS:
ALL PROFILE PLATE ASSEMBLIES SHALL BE INCLUDED IN THE DF UNIT'S ETL LISTING AND COMPLY WITH COMBINED SAFETY STANDARDS ANSI Z83.4 AND CSA 3.7 (NON-RECIRCULATING DF HEATERS) AND ANSI Z83.18 (RECIRCULATING DF HEATERS).

GENERAL CONSTRUCTION:

- PROFILE PLATES SHALL BE FORMED FROM G90 GALVANIZED STEEL.
- PROFILE PLATES SHALL VARY IN SIZE PER UNIT.
- PROFILE PLATES SHALL BE MOUNTED ALONG THE SAME PLANE AS THE DISCHARGE OF THE BURNER.
- DESIGN SHALL INCORPORATE PROPERLY TORQUED, PERMANENTLY MOUNTED SPRING HINGES.
- SPRING HINGES SHALL BE MADE FROM PLATED STEEL.

GREASE DUCT & CHIMNEY SPECIFICATIONS:
PROVIDE GREASE DUCT EQUAL TO ECON-AIR MODEL "EDW" ROUND 20 GAUGE 430 STAINLESS STEEL DUCTWORK. MODEL "EDW" IS LISTED TO UL-1978 AND IS INSTALLED USING "V" CLAMP LOCKING CONNECTIONS SEALED WITH 3M FIRE BARRIER 2000 PLUS. MODEL "EDW" DOES NOT REQUIRE WELDING PROVIDING IT HAS BEEN INSTALLED PER THE MANUFACTURES INSTALLATION GUIDE.
PROVIDE RATED ACCESS DOORS AT EVERY CHANGE IN DIRECTION AND EVERY 12' ON CENTER. PER MANUFACTURES LISTING MODEL "EDW" HORIZONTAL RUNS LESS THAN 75 FT. CAN BE SLOPED 1/16" PER 12", HORIZONTAL RUNS MORE THAN 75 FT. CAN BE SLOPED 3/16" PER 12". DUCT SHOULD BE SLOPED AS MUCH AS POSSIBLE TO REDUCE THE CHANCE OF GREASE ACCUMULATION IN HORIZONTAL RUNS.

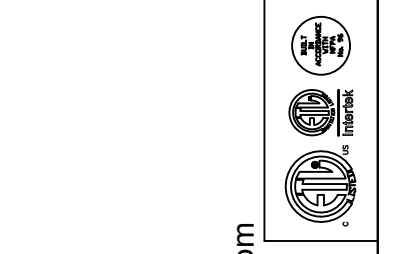
IF THE DUCT OR CHIMNEY IS WITHIN 18 INCHES OF COMBUSTIBLE MATERIAL, PROVIDE UL-2221 OR UL-103 HT LISTED DOUBLE WALL GREASE DUCT OR DOUBLE WALL CHIMNEY EQUAL TO ECON-AIR MODEL "EDW- 2R, 2R TYPE HT, 3R, OR 3Z" ROUND 20 GAUGE 430 STAINLESS INNER DUCT INSULATED WITH A 24 GAUGE 430 STAINLESS OUTER SHELL.

CUSTOMER APPROVAL TO MANUFACTURE:

| | |
|----------------------------------|--------------------------|
| APPROVED AS NOTED | <input type="checkbox"/> |
| APPROVED WITH NO EXCEPTION TAKEN | <input type="checkbox"/> |
| REVISE AND RESUBMIT | <input type="checkbox"/> |
| SIGNATURE _____ | |
| YOUR TITLE _____ DATE _____ | |

REVISIONS

| DESCRIPTION | DATE |
|-------------|------|
| | |
| | |
| | |
| | |

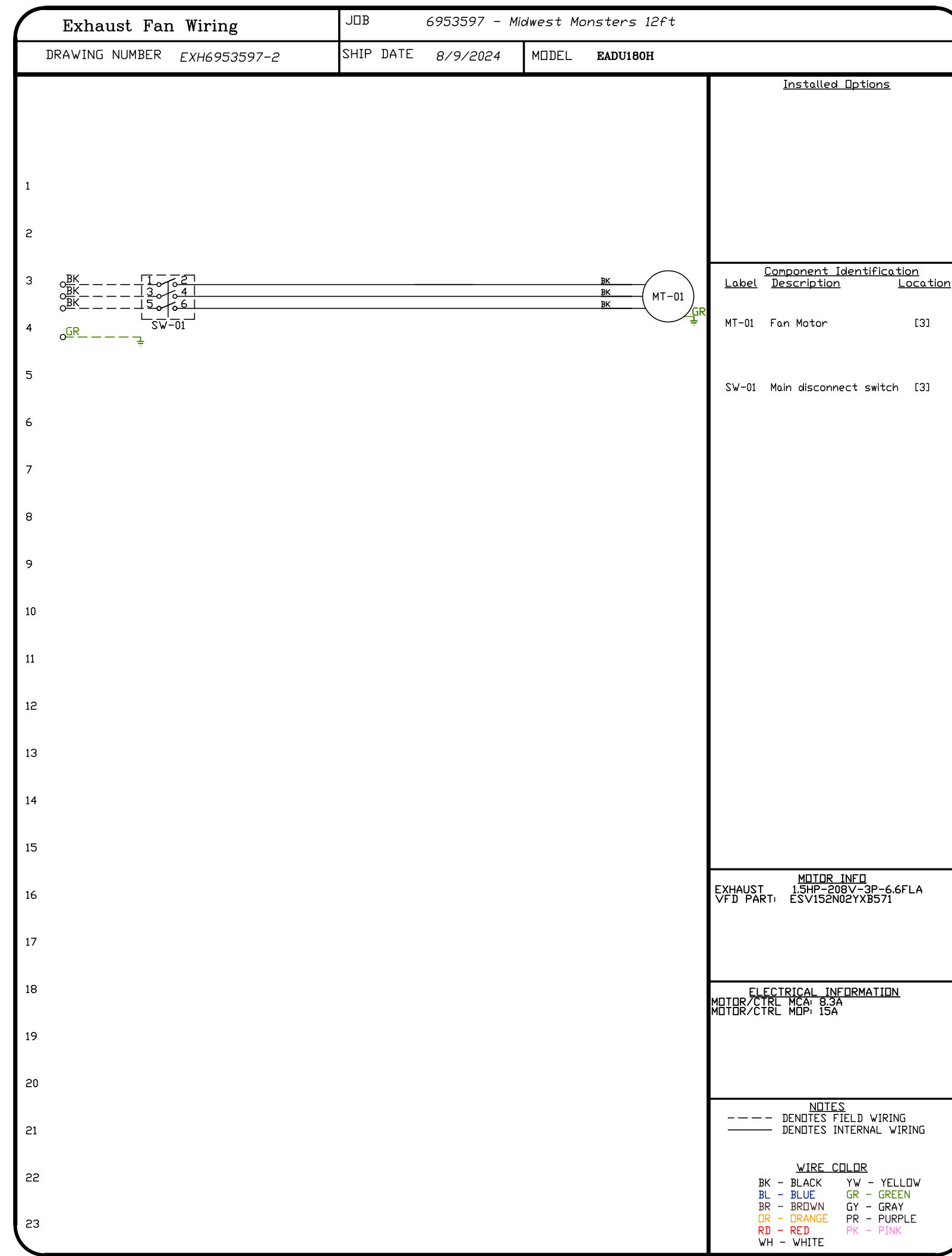


Econ-air
www.econair.com
WISCONSIN OFFICE
609 Bridge Street, Grafton, WI, 53024 PHONE: (262) 241 - 9210 FAX: 9192275945 EMAIL: reg78@econair.com

Midwest Monsters 12ft
MILWAUKEE, WI, 53206

DATE: 8/9/2024
DWG.#: 6953597
DRAWN BY:
SCALE: 3/4" = 1'-0"
MASTER DRAWING

SHEET NO.
4



| REVISIONS | |
|-------------|------|
| DESCRIPTION | DATE |
| | |
| | |
| | |
| | |
| | |

WISCONSIN OFFICE
www.econair.com
609 Bridge Street, Grafton, WI, 53024 PHONE: (262) 241 - 9210 FAX: 9192275945 EMAIL: reg78@econair.com

Midwest Monsters 12ft
MILWAUKEE, WI, 53206

DATE: 8/9/2024

DWG.#:
6953597

DRAWN BY:

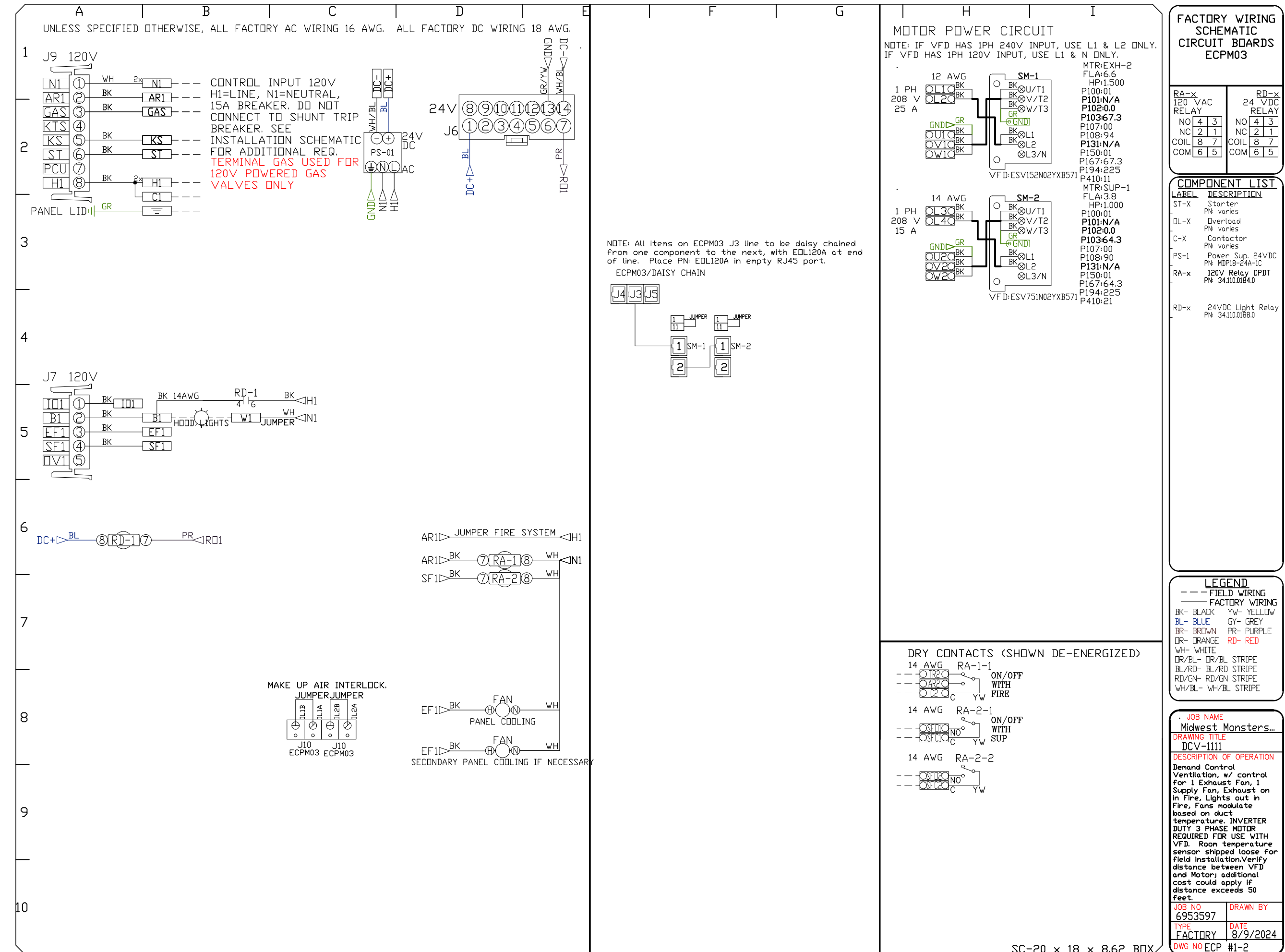
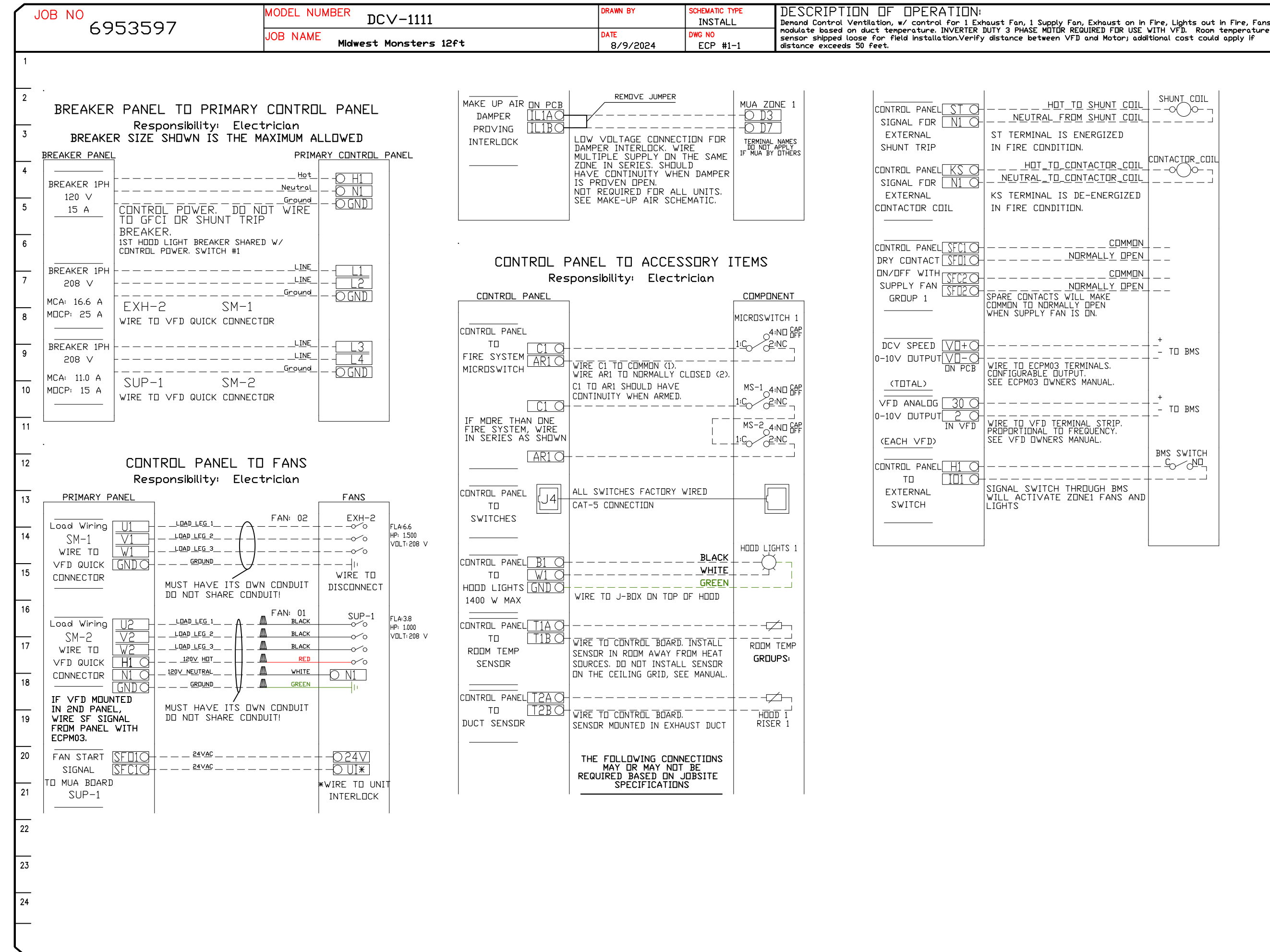
SCALE:
3/4" = 1'-0"

MASTER DRAWING

SHEET NO.
5

ELECTRICAL PACKAGE - JOB#6953597

| NO | TAG | PACKAGE # | LOCATION | SWITCHES | | OPTION | FANS CONTROLLED | | | | |
|----|-----|-----------|----------------------|-------------------|------------------|--------------------|-----------------|---|-------|------|-----|
| | | | | LOCATION | QUANTITY | | TYPE | Φ | HP | VOLT | FLA |
| 1 | | DCV-1111 | WALL MOUNT IN SS BOX | SS WALL MOUNT BOX | 1 LIGHT 1 FAN | SMART CONTROLS DCV | SUPPLY | 3 | 1.000 | 208 | 3.8 |
| | | | | | | | EXHAUST | 3 | 1.500 | 208 | 6.6 |



REVISIONS

| NO. | DESCRIPTION | DATE |
|-----|-------------|------|
| | | |
| | | |
| | | |
| | | |

Midwest Monsters 12ft
MILWAUKEE, WI, 53206

DATE: 8/9/2024
DWG.#: 6953597
DRAWN BY:
SCALE: 3/4" = 1'-0"
MASTER DRAWING

SHEET NO.
7

WISCONSIN OFFICE
www.econair.com
609 Bridge Street, Grafton, WI, 53024 PHONE: (262) 241 - 9210 FAX: 9192275945 EMAIL: reg7@econair.com

